

**WE KNOW HOW.**

**Engineering. Machine manufacturing.**

# NOBAG / WHO?

## WE KNOW WHAT WE ARE TALKING ABOUT!

NOBAG is an internationally active partner for high-class engineering and machine manufacturing. We offer comprehensive services for slitting lines, presses and special machines:

- Construction of machines, plants, components
- Engineering (concept studies, FEM analyses, calculation, design)
- In-house assembly, commissioning
- Maintenance (service, repair, overhaul)
- Spare parts
- CE machine safety (safety analyses, action planning, implementation control)
- Training (operation, maintenance, cutting seminars)

Engineering at the highest level, efficiency and the unconditional will to flexibility are the basis for individual customer solutions. The demands on us are always special and far from standard.

We understand what our customers really want:

- because our sales team and the majority of our team consists of technicians.
- because you are supported by a single competent contact person during the entire process.
- because we are agile enough to find special tasks exciting and solve them perfectly.

**Our customers receive tailor-made solutions for their market success.**



## TALK TO US!

### **STEFAN GRAF**

Sales Director  
Member of the Executive Board

Tel +41 33 334 56 46  
s.graf@nobag.com



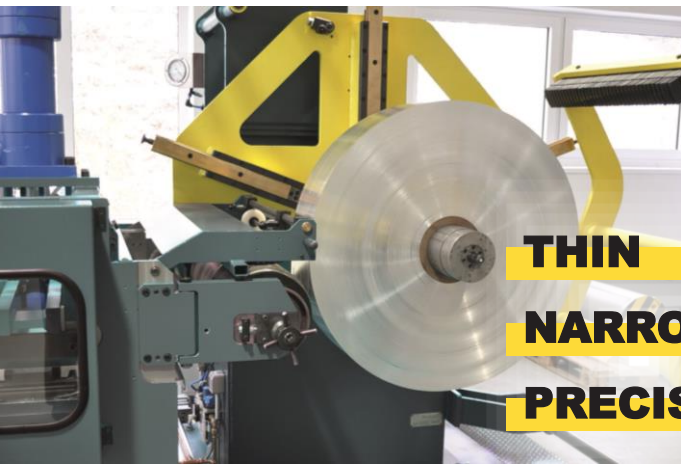
**To all contact persons & representatives**



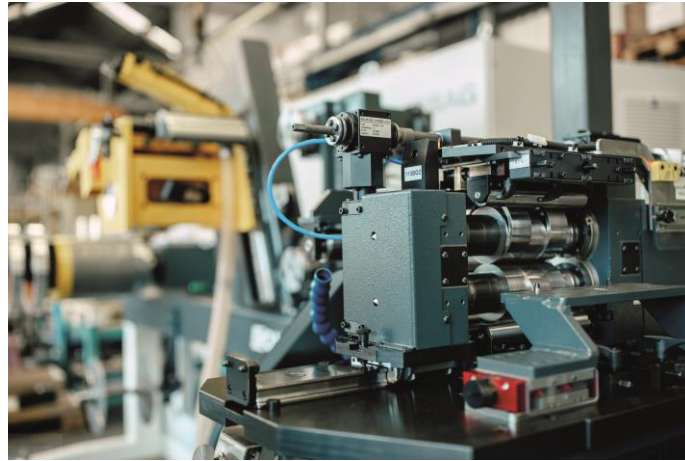
[nobag.com/en/contact-us](https://nobag.com/en/contact-us)

# COIL PROCESSING

**INDIVIDUAL LINES FOR  
INDIVIDUAL CUSTOMERS**



**THIN**  
**NARROW**  
**PRECISE**



NOBAG equipment meet the very highest requirements for slitting quality, precision and productivity.

Since 1919, we have been combining engineering knowledge and experience with the latest innovative approaches. The limits of what is technically feasible are redefined with every order. For example, our slitting lines achieve strip widths from 0.5mm. This can only be achieved by the unrivalled quality, stability and durability of our slitters.

In addition to standardised slitting lines, an economical combination of performance, quality and versatility, we pay particular attention to customerspecific solutions. Each line is adapted to the individual customer requirements.



- **Slitting lines**
- **Slitter**
- **Coil processing lines**
- **Components**
- **Customized lines**

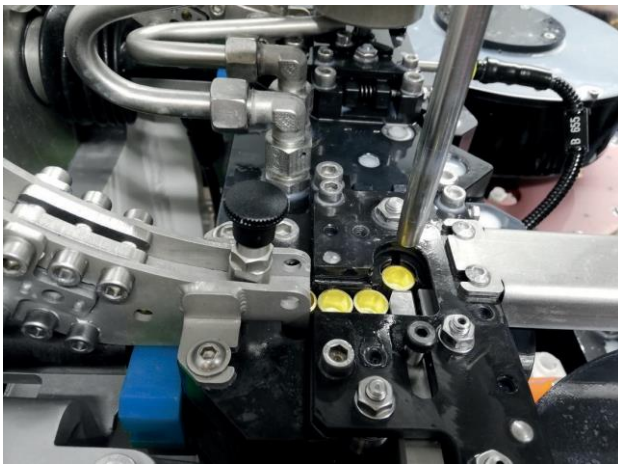
# COLD FORMING



## HIGH-END COMPETENCE CENTER

NOBAG develops and produces mechanical and hydraulic presses for drawing and cold forming of hollow and solid bodies of steel, aluminium and non-ferrous metals.

**COLD FORMING PRESSES**  
**ADDITIONAL MACHINES**  
**TOOL ENGINEERING**  
**PROCESS DEVELOPMENT**



We are your competent partner for forming technology with a focus on the production of hollow parts.

Intermediate and rework operations such as annealing or trimming, ensure economic efficiency and increase the production capacity of our customers.



# SPECIAL MACHINES

## MACHINES FOR SPECIAL TASKS

In the area of special purpose machinery, we serve customers from a wide range of industries with the most diverse requirements. What they all have in common is that they are far from standard. Thanks to our excellent know-how and unique consulting competence we achieve solutions that are not available on the market in this form.

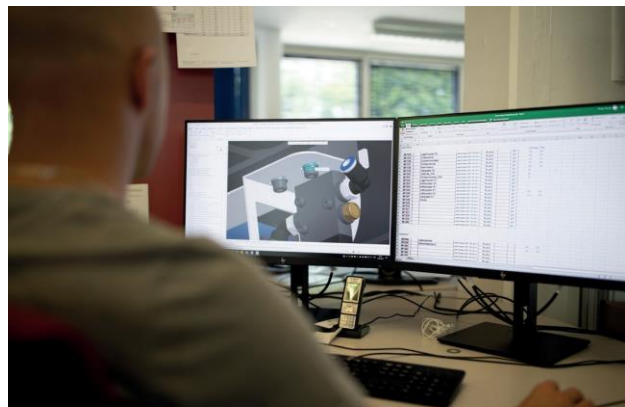
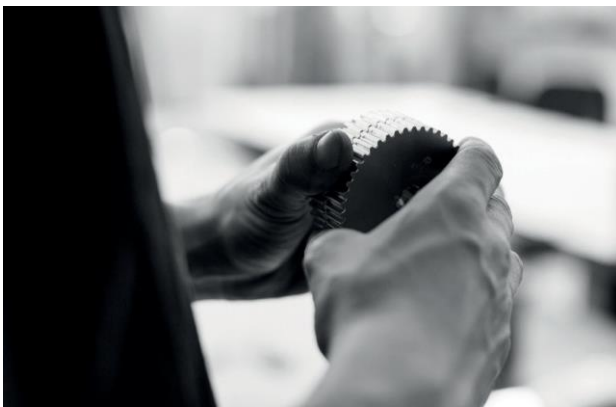
NOBAG develops and produces machines in partnership with our customers. In this combination we contribute to your market success.

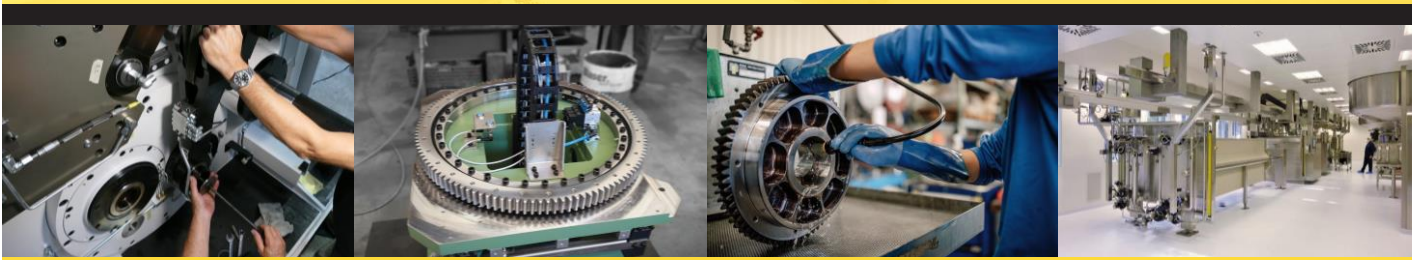
## AREAS OF EXPERIENCE

- **Plant engineering**
- **Fixture construction**
- **Automatic machines**
- **Handling**
- **Clean Room**
- **Atex**



**TAILOR-MADE:  
MACHINES AND PLANTS  
ACCORDING TO CUSTOMER  
REQUIREMENTS**





**NOBAG**  
NOBS ENGINEERING AG

Glütschbachstrasse 61  
3661 Uetendorf  
Switzerland

Tel +41 33 334 56 56  
info@nobag.com  
www.nobag.com



**WE KNOW HOW.**

**||||| Cold Forming**

# NOBAG / WHO?

**WE KNOW WHAT WE  
ARE TALKING ABOUT!**

## **HIGH-END COMPETENCE CENTER**

NOBAG develops and produces mechanical and hydraulic presses for drawing and cold forming of hollow and solid bodies of steel, aluminium and non-ferrous metals.

**COLD FORMING PRESSES  
ADDITIONAL MACHINES  
TOOL ENGINEERING  
PROCESS DEVELOPMENT**

**TALK TO US!**

### **STEFAN GRAF**

Sales Director  
Member of the Executive Board

Tel +41 33 334 56 46  
s.graf@nobag.com



**To all contact persons &  
representatives**

[nobag.com/en/contact-us](http://nobag.com/en/contact-us)



We define ourselves as a competence center for forming technology with a focus on the production of hollow parts.

Intermediate and rework operations such as annealing or trimming, ensure economic efficiency and increase the production capacity of our customers.

Our customers receive tailor-made solutions for their market success.

# SMALL CALIBRE PRESS

**Combined presses < 12.7 mm / machine output up to 240 pieces/min**

## Cupping Press Type NP



Washing, Annealing  
Pickling, Lubricating

## Draw & Trim Press Type KZP



Washing

## Heading, Pierce & Taper Press Type KBEP



Washing,  
Groove turning,  
Trimming to length,  
Degreasing

## Case Body Annealing machine Type RGM

Pickling, Lubricating

## Case Neck Annealing machine Type HGM

### Key features included in machine

\*(for KZP)    \*\*(for KBEP)

- **Asymmetric independent strokes for each process\***
- **Cascade principle – product only passes tooling one-way\***
- **Independent strokes for each process heading and tapering process\*\***
- **Double toggle lever system for indenting and heading\*\***
- **Case transportation based on rotary tables**
- **Integrated die heating by last tapering station for stable shoulder length\*\***
- **Machine can be installed on normal work floor, no foundation necessary**
- **Machine equipped with two control panels for 360° operator access\*\***
- **Process monitoring**

**All of the process steps listed can also be performed with single presses.**

# MEDIUM CALIBRE PRESS

**Single presses 12.7 - 40 mm / machine output up to 100 pieces/min**

## Draw Press Type WON 2



This press is designed, among other things, for drawing steel or brass cases.

### Technical data **WON 2 - 50** / **WON 2 - 160**

Press force	kN	500	/	1,600
Stroke	mm	500	/	600
Strokes per	min-1	30 - 50	/	25
Weight	to	11	/	18

## Heading Press Type WON 3



The press is designed, among other things, for the bottom pressing of steel or brass cases.

For forming, it is equipped with a unique toggle lever for the best forming results.

Other forward or reverse extrusion operations can also be performed.

### Technical data **WON 3 - 315** / **WON 3 - 400**

Press force	kN	3,150	/	4,000
Stroke	mm	320	/	600
Strokes per	min-1	30 - 50	/	25
Weight	to	20	/	25

## Necking Press Type WON 4



The press is designed, among other things, for tapering and calibrating steel or brass cases.

Depending on the product size, it also has the option of piercing a fire hole directly in the machine

### Technical data **WON 4 - 30** / **WON 4 - 65**

Press force	kN	300	/	650
Stroke	mm	360	/	600
Strokes per	min-1	50	/	25
Weight	to	12	/	27

**The presses listed above can also be equipped as double-row presses.**

# ADDITIONAL MACHINES

## Machines for special tasks

NOBAG develops and produces machines in partnership with our customers. In this combination we contribute to your market success.

### Core press Type KP

Core presses are suitable for forming bullet cores from wire made of lead and other materials. They deliver outstanding product accuracy for maximum bullet precision.



### Bullet press Type KGSP

Bullet presses form the bullet jacket, insert the bullet core into the jacket, close off the tail and finish the bullets with a groove and/or other geometry definitions.

## Intermediate machines

### Cut-off machine Type BSA



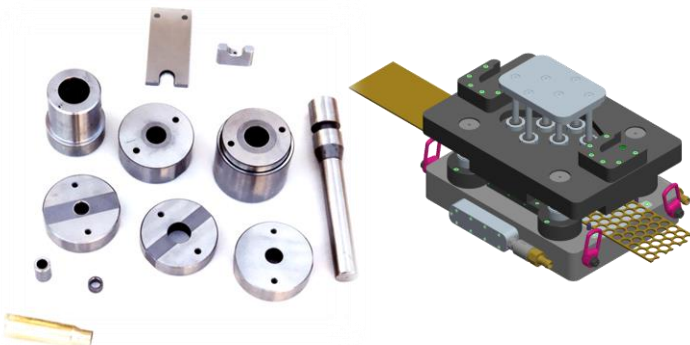
### Case body annealing machine Type RGM



### Neck annealing machine Type HGM

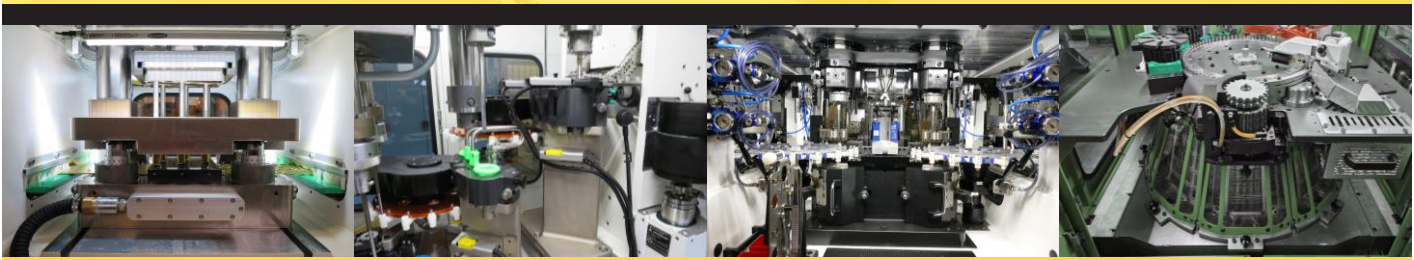


## We offer more than machines



- State calculations
- Tool calculations
- Machine development
- Cleaning and annealing processes
- Chaining
- Commissioning
- Complete cupping - press tool block
- Dimensioning, tests and running-in at customer's site

***We offer you full process support and the best service.***



**NOBAG**  
NOBS ENGINEERING AG

Glütschbachstrasse 61  
3661 Uetendorf  
Switzerland

Tel +41 33 334 56 56  
info@nobag.com  
www.nobag.com



**WE KNOW HOW.**

 **Special Machines**

# NOBAG / WHO?

**WE KNOW WHAT WE  
ARE TALKING ABOUT!**

## TALK TO US!

### **STEFAN GRAF**

Sales Director  
Member of the Executive Board

Tel +41 33 334 56 46  
s.graf@nobag.com



**To all contact persons &  
representatives**



[nobag.com/en/contact-us](https://nobag.com/en/contact-us)

NOBAG is an internationally operating Swiss company specialising in high quality special purpose machinery.

We understand what our customers really want:

- Because our sales team and most of our team are made up of technicians
- Because you are looked after by a single competent contact person throughout the entire process
- Because we are agile enough to find special tasks exciting

**Our customers receive tailor-made solutions for their market success.**

# WHAT / WHY?





# **Special machines for special requirements.**

## **AREAS OF EXPERIENCE**

- **Plant engineering**
- **Fixture construction**
- **Automatic machines**
  
- **Handling**
- **Clean Room**
- **Atex**

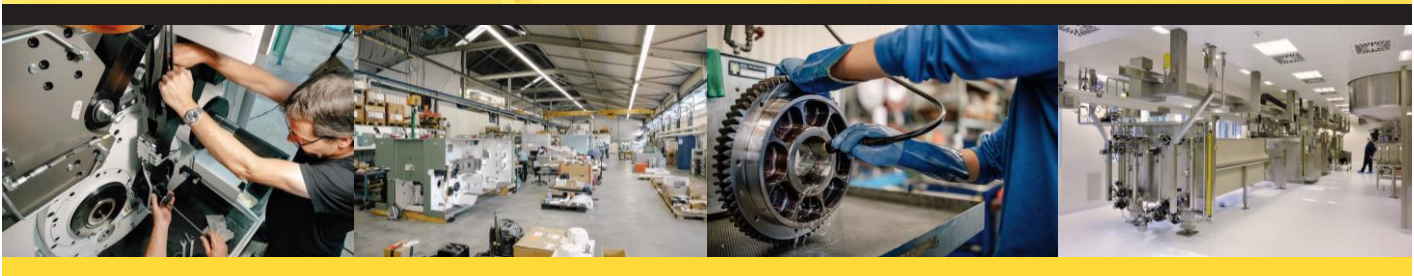
## **WE KNOW HOW!**

If you ask, you'll get an answer. The more you ask, the more you'll get. And if you ask smartly, you might even come up with a solution that's surprising but always convincing. That's what we call special machine construction from NOBAG.

We support customers from a wide range of industries with the most diverse requirements. Thanks to our outstanding expertise, unique consulting skills, we are able to deliver solutions that do not yet exist on the market.

NOBAG is a development partner and a manufacturer. In this combination, we contribute to the market success of our customers.





**NOBAG**  
NOBS ENGINEERING AG

Glütschbachstrasse 61  
3661 Uetendorf  
Switzerland

Tel +41 33 334 56 56  
info@nobag.com  
www.nobag.com